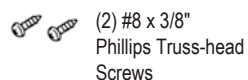
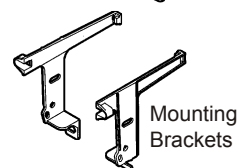
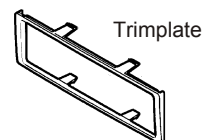
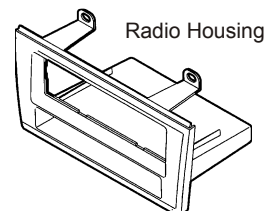


KIT FEATURES

- ISO and DIN head unit provisions
- Pocket

KIT COMPONENTS



TOOLS REQUIRED



Phillips screwdriver

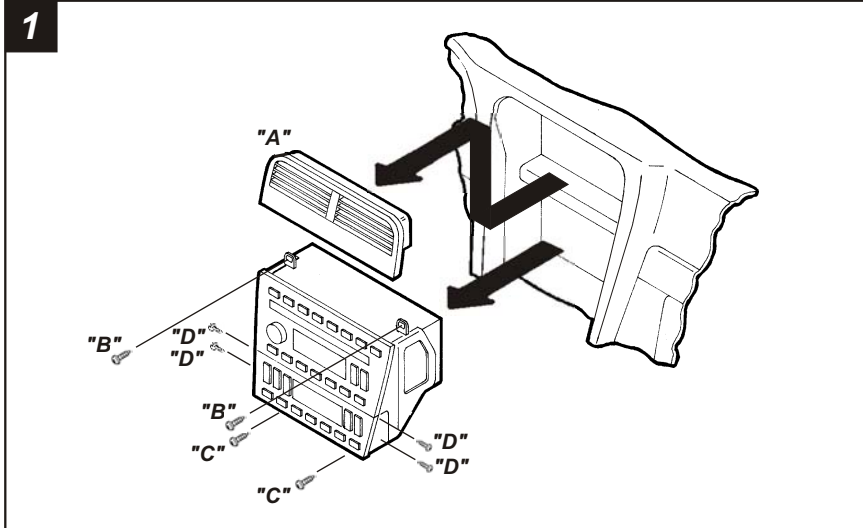
99-5000 INSTALLATION INSTRUCTIONS

APPLICATIONS

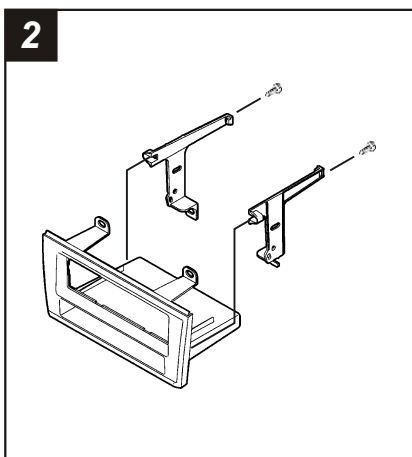
<u>CAR</u>	<u>PAGE</u>
LINCOLN	
LS 2000-06.....	1-2
FORD	
Thunderbird 2002-05.....	1-2



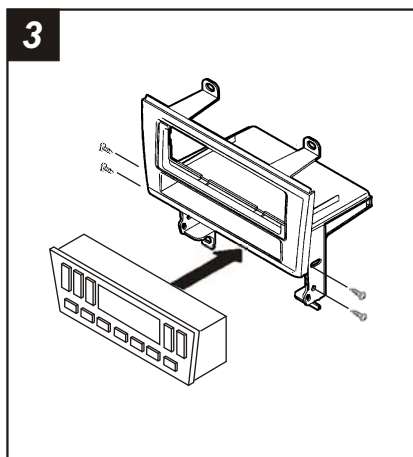
ALL VEHICLES



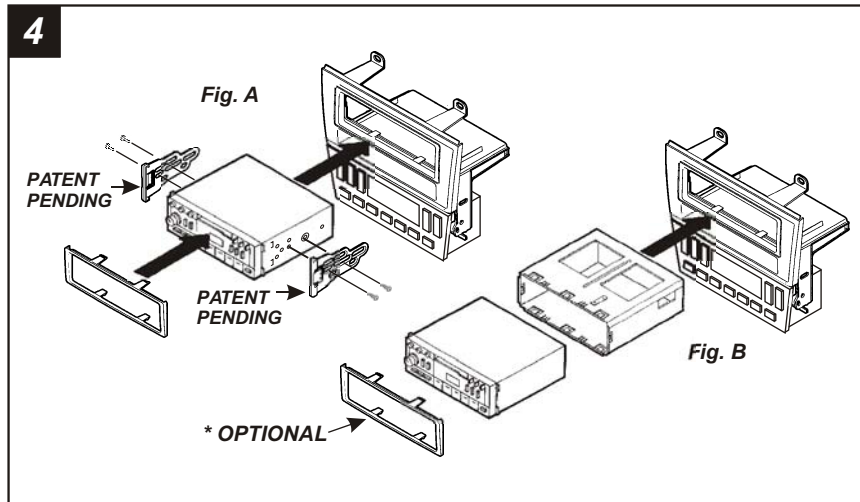
Disconnect the negative battery terminal to prevent an accidental short circuit. Unclip the a/c vent panel ("A") and remove (2) Phillips screws exposed at the top of the factory head unit ("B"). Remove (2) Phillips screws below the climate control pod ("C"). Slide the head unit/climate control pod assembly from the dash cavity and disconnect the wiring. Remove (4) Phillips screws securing the climate control pod to the factory brackets ("D") and remove the pod.



Secure the **Mounting Brackets** to the **Radio Housing** with (2) #8 x 3/8" Phillips Truss-head Screws supplied.

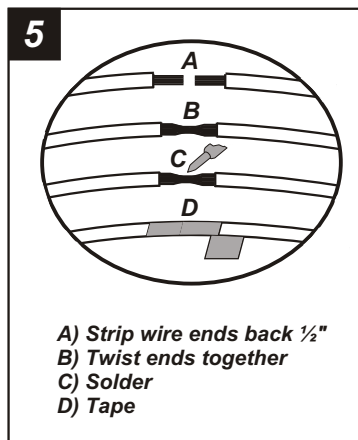


Slide the climate control pod into the **Radio Housing** and secure with (4) #8 x 3/8" Phillips Pan-head Screws supplied

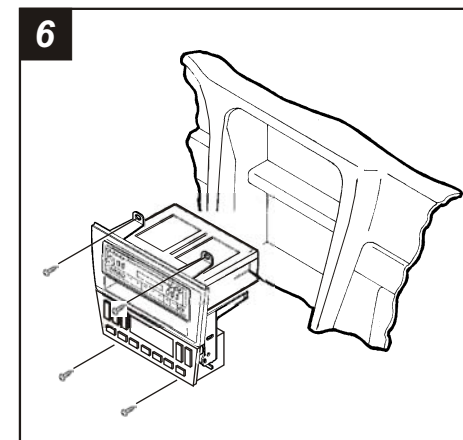


ISO HEAD UNITS: Mount the **ISO Brackets** to the head unit with the screws supplied with the unit. Slide the head unit into the radio opening until the side clips engage. Snap the **Trimplate** into the **Radio Housing**. (see Fig. A).

DIN HEAD UNITS: Slide the DIN cage into the Housing and secure by bending the metal locking tabs down. Slide the aftermarket head unit into the cage and secure. Snap the ***Trimplate** into the **Radio Housing**. (see Fig. B)



Locate the factory wiring harness in the dash. Metra recommends using the proper mating adaptor and making connections as shown. (Isolate and individually tape off the ends of any unused wires to prevent electrical short circuit).



Re-connect the battery terminal and test the unit for proper operation. Mount the head unit/climate control pod assembly to the sub-dash with (4) Phillips screws previously removed in step #1. Replace the a/c vent panel.