

## BEEBF-24

**NOTE:** This interface is not compatible with: 2004 - 2006 Vehicles With THX or Navigation systems.

### APPLICATIONS

#### FORD

2004-2006 Crown Victoria  
2007-2010 Edge  
2004-2011 Escape  
2006-2007 Escape Hybrid  
2004-2010 Expedition  
2004-2010 Explorer  
2004-2012 F-150  
2004-2010 F-250  
2004-2010 F-350  
2004-2010 F-450  
2004-2010 F-550  
2005-2007 Five Hundred  
2009-2010 Flex  
2004-2011 Focus  
2004-2007 Freestar  
2005-2007 Freestyle  
2006-2011 Fusion  
2004-2012 Mustang  
2008-2010 Taurus  
2004-2005 Thunderbird

#### LINCOLN

2003-2005 Aviator  
2004-2006 LS  
2006-2008 Mark LT  
2009-2010 MKS  
2010-2011 MKT  
2006-2011 MKX  
2006-2011 MKZ  
2004-2011 Navigator  
2004-2010 Town Car  
2006-2006 Zephyr

#### MERCURY

2003-2005 Grand Marquis  
2006-2010 Mariner  
2006-2011 Milan  
2005-2007 Montego  
2004-2007 Monterey  
2006-2010 Mountaineer  
2008-2009 Sable

**Disclaimer:** If your manufacturing build date is near the cut off of the next year model, you may have a different style of harness. If your harness is different please contact us for updates.

**Special Note :** For Lincoln 2007-upwards Navigation Screen Radios:

1. Disconnect Red Wire on 2 PIN Molex connector.
2. Disconnect Red Wire and White/Black Wire on other 2 PIN Molex Connector.
3. If experiencing small audio on Subwoofer when BT engaged , Connect Brown/White wire Molex Connectors ("SUBWOOFER ATTENUATION ").

#### Important Note:

3.1 If this vehicle has THX system , Disconnect Brown/White wire Molex Connectors

## BLUETOOTH INTERFACE FOR SELECT 2003-UP FORD, LINCOLN & MERCURY VEHICLES

We recommend reading this installation guide first before starting any work. Following these instructions from "Start" to "Finish" will ensure a smooth and hassle free installation. We offer telephone support M-F 9:00 AM - 5:00PM PDT at 1 (855) 822-1348. We are here to help.

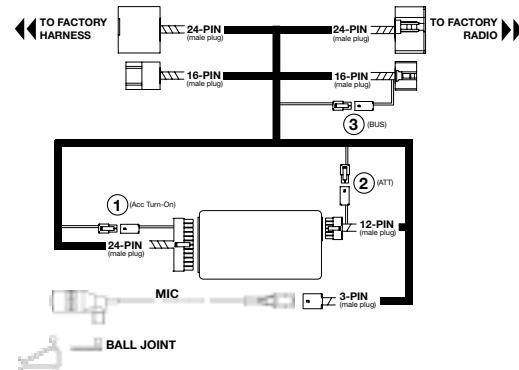
#### PRELIMINARY:

- Disconnect the positive(+) battery cable for radios that are non-navigation. Radios that are navigation ready should not disconnect the battery cable. Please use caution when installing. Do not install the interface near or on the vehicle's HVAC system. This will prevent overheating and condensation build up.
- Determine the proper installation method for your specific vehicle. Use overview to help you determine installation method.
- Be aware that the interface only allows for the audio to be heard through the front speakers.

#### INSTALLATION

1. Remove the factory radio to gain access to the factory radio wiring connectors.
2. Disconnect the factory connectors from the rear of the factory radio.
3. Connect the male connectors of the interface power harness into the factory radio.
4. Reconnect the factory connectors into the mating connectors of the interface.
5. Connect the male 3-pin connector into the pigtail connector.
6. Route the microphone to a desired location, (for example above the rear view mirror).
7. Re-install a factory radio back into the vehicle's dash.

#### FORD HARNESS



#### CONNECTING THE 1, 2, AND 3 CONNECTORS:

**FOR NUMBER DESCRIPTIONS SEE INCLUDED SLIP SHEET.**

Option One: For early model vehicles make connections on 1 and 3.

Option Two: For vehicles with Subwoofer make connection on 2.

#### MOUNTING THE MICROPHONE

1. Insert the mounting clip into the ball joint on the microphone.
2. Mount the clip on your visor or near the rear view mirror.
3. Route the remaining cable along the edge of the roof liner and towards the back of the radio, hiding the cable from sight.

#### INITIAL PAIRING TO THE VOICE PROMPTS:

1. READY (POWER ON)
2. SEARCHING PHONES (FOR PREVIOUS PAIRED PHONES)
3. PLEASE SEARCH AND SELECT THE "BEEBF-24" DEVICE FROM MOBILE PHONE AND ENTER "0000".
4. YOU ARE NOW READY TO USE THE HF SYSTEM.

Note: The Bluetooth interface will remember up to the last 8 devices.

Note: If pairing is unsuccessful after several attempts power off then power back on to re-attempt, if unsuccessful please contact our tech support line.

#### AUTO RE-CONNECT:

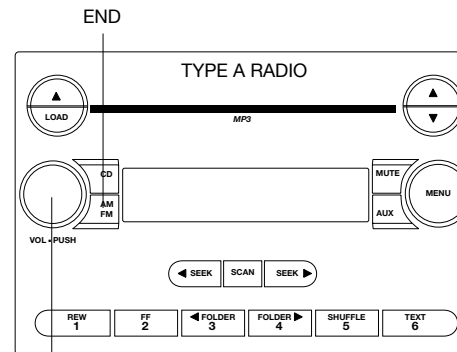
1. The BEEBF-24 module will automatically re-connect the a previously paired mobile phone when the ignition is turned "ON" to the vehicle and the mobile phone's Bluetooth feature is also on.

Note: The Bluetooth module will re-connect with the last mobile phone's it was paired with. If no mobile phone is not found, it will revert to the pairing process.

#### USING TYPE "A" RADIO BUTTONS

VOICE DIAL	PRESS AM/FM BUTTON TWICE
ANSWER	PRESS PWR BUTTON ONCE
END A CALL	PRESS AM/FM BUTTON TWICE
REJECT	PRESS AM/FM BUTTON TWICE
ANSWER SECOND CALL	PRESS PWR BUTTON ONCE
SWITCH BETWEEN CALLS	PRESS PWR BUTTON ONCE
ENTER PRIVACY MODE	PRESS PWR BUTTON ONCE
INCREASE VOLUME	TURN VOLUME KNOB UP
DECREASE VOLUME	TURN VOLUME KNOB DN

#### OPERATING THE HANDS-FREE FEATURES ON THE RADIO



#### ANSWER

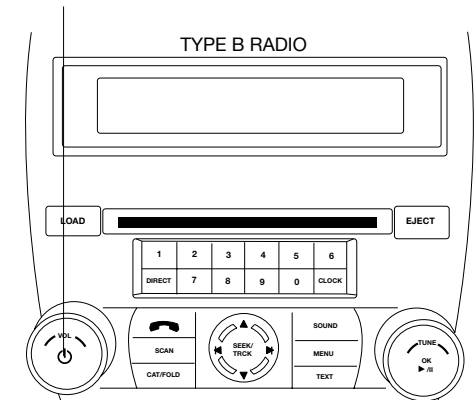
All features of this module may vary by mobile phone manufacturer. For questions on your mobile phone's features, please reference the mobile phone's user manual for information.

Note: THX Systems, Premium Audio Systems need to "Turn On" the radio for hands-free audio to be heard.

#### USING TYPE "B" RADIO BUTTONS

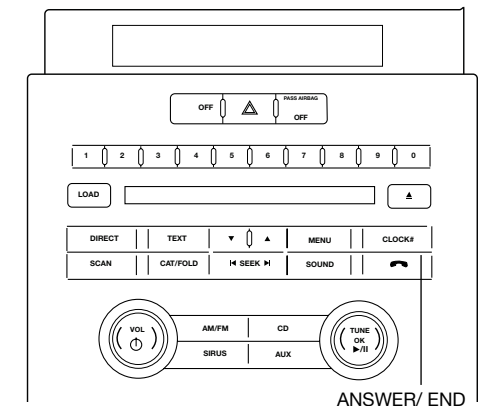
VOICE DIAL	PRESS PWR BUTTON TWICE
ANSWER	PRESS PWR BUTTON ONCE
END A CALL	PRESS PWR BUTTON TWICE
REJECT	PRESS PWR BUTTON TWICE
ANSWER SECOND CALL	PRESS PWR BUTTON ONCE
SWITCH BETWEEN CALLS	PRESS PWR BUTTON ONCE
ENTER PRIVACY MODE	PRESS PWR BUTTON ONCE
INCREASE VOLUME	TURN VOLUME KNOB UP
DECREASE VOLUME	TURN VOLUME KNOB DN

#### ANSWER/ END



#### USING THE PHONE BUTTON ON THE RADIO

ANSWER	PRESS  BUTTON ONCE
END A CALL	HOLD  BUTTON FOR 2 SEC.
REJECT	HOLD  BUTTON FOR 2 SEC.
ANSWER SECOND CALL	PRESS  BUTTON ONCE
SWITCH BETWEEN CALLS	PRESS  BUTTON ONCE
ENTER PRIVACY MODE	PRESS  BUTTON ONCE



#### ANSWER/ END

**IMPORTANT NOTE:** For the 2012 Ford F-150, the controls on the steering wheel control do not work. Only the phone button works.

## BEEBF-24

**NOTE:** This interface is not compatible with:  
2004 - 2006 Vehicles With THX or Navigation systems.

### APPLICATIONS

#### FORD

2004-2006 Crown Victoria  
2007-2010 Edge  
2004-2011 Escape  
2006-2007 Escape Hybrid  
2004-2010 Expedition  
2004-2010 Explorer  
2004-2012 F-150  
2004-2010 F-250  
2004-2010 F-350  
2004-2010 F-450  
2004-2010 F-550  
2005-2007 Five Hundred  
2009-2010 Flex  
2004-2012 Focus  
2004-2007 Freestar  
2005-2007 Freestyle  
2006-2011 Fusion  
2004-2012 Mustang  
2008-2010 Taurus  
2004-2005 Thunderbird

#### LINCOLN

2003-2005 Aviator  
2004-2006 LS  
2006-2008 Mark LT  
2009-2010 MKS  
2010-2011 MKT  
2006-2011 MKX  
2006-2011 MKZ  
2004-2011 Navigator  
2004-2010 Town Car  
2006-2006 Zephyr

#### MERCURY

2003-2005 Grand Marquis  
2006-2010 Mariner  
2006-2011 Milan  
2005-2007 Montego  
2004-2007 Monterey  
2006-2010 Mountaineer  
2008-2009 Sable

**Disclaimer:** If your manufacturing build date is near the cut off of the next year model, you may have a different style of harness. If your harness is different please contact us for updates.

**Special Note :** For Lincoln 2007-upwards  
Navigation Screen Radios:

1. Disconnect Red Wire on 2 PIN Molex connector.
2. Disconnect Red Wire and White/Black Wire on other 2 PIN Molex Connector.
3. If experiencing small audio on Subwoofer when BT engaged , Connect Brown/White wire Molex Connectors ("SUBWOOFER ATTENUATION").

#### Important Note:

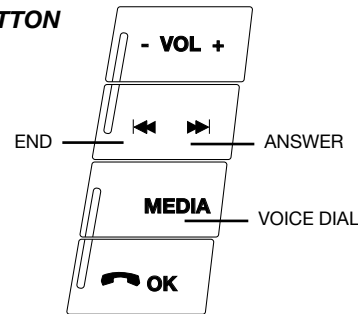
- 3.1 If this vehicle has THX system , Disconnect Brown/White wire Molex Connectors

## BLUETOOTH INTERFACE FOR SELECT 2003-UP FORD, LINCOLN & MERCURY VEHICLES

### USING THE STEERING WHEEL CONTROLS (NEW STYLE)

VOICE DIAL	HOLD MEDIA BUTTON FOR 2 SEC.
ANSWER CALL	PRESS SEEK UP ONCE
END CALL	PRESS SEEK DOWN ONCE
REJECT CALL	PRESS SEEK DOWN ONCE
ANSWER 2ND CALL	PRESS SEEK UP ONCE
SWITCH CALLS	PRESS SEEK UP ONCE
ENTER PRIVACY MODE	PRESS SEEK UP ONCE
INCREASE VOLUME	PRESS VOLUME +
DECREASE VOLUME	PRESS VOLUME -

### 5-BUTTON



### IMPORTANT NOTE: FOR SOME OLDER FORD AND LINCOLN VEHICLES.

#### FOR OLDER VEHICLES WITH STEERING WHEEL CONTROL:

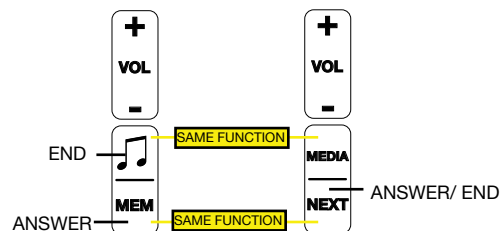
If your vehicle is equipped with steering wheel control that contain a "MEM" button, the controls on your radio controls will not function while using the Bluetooth interface.

All functions will be made from the steering wheel controls only.

### USING THE STEERING WHEEL CONTROLS (OLD STYLE)

VOICE DIAL	HOLD MEDIA BUTTON FOR 2 SEC.
ANSWER	PRESS MEMORY BUTTON ONCE
END	HOLD MEMORY BUTTON FOR 2 SEC.
REJECT	HOLD MEMORY BUTTON FOR 2 SEC.
ANSWER 2ND CALL	PRESS MEMORY BUTTON ONCE
SWITCH CALLS	PRESS MEMORY BUTTON ONCE
ENTER PRIVACY MODE	PRESS MEMORY BUTTON ONCE
INCREASE VOLUME	PRESS VOLUME +
DECREASE VOLUME	PRESS VOLUME -
ENTER VOICE MENU	HOLD MEDIA BUTTON FOR 2 SEC. THEN PRESS MEDIA TO NAVIAGTE.

### 4-BUTTON



### USING THE MENU STRUCTURE: FOR RADIO TYPE "A".

#### MISSED CALLS:

1. Press the "AM/FM" button twice.
2. Press the "AM/FM" button once to enter the menu options.  
Continue to press the "AM/FM" button twice till you hear the interface announce "MISSED CALLS", and wait for the numbers to be announced.
3. When the number you wish to dial is announced, press the "PWR" button once to make the call.

#### INCOMING CALLS:

1. Press the "AM/FM" button twice.
2. Press the "AM/FM" button once to enter the menu options.  
Continue to press the "AM/FM" button twice till you hear the interface announce "INCOMING CALLS", and wait for the numbers to be announced.
3. When the number you wish to dial is announced, press the "PWR" button once to make the call.

#### OUTGOING CALLS:

1. Press the "AM/FM" button twice.
2. Press the "AM/FM" button once to enter the menu options.  
Continue to press the "AM/FM" button twice till you hear the interface announce "OUTGOING CALLS", and wait for the numbers to be announced.
3. When the number you wish to dial is announced, press the "PWR" button once to make the call.

#### SETTING TTS VOLUME:

1. Press the "AM/FM" button twice.
2. Press the "AM/FM" button once to enter the menu options.  
Continue to press the "AM/FM" button twice till you hear the interface announce "SETTING VOLUME", and wait for her announcement.
3. Set the TTS volume by turning the volume knob and waiting for the announcement. Each announcement will indicate the volume level of the TTS.
4. When the desired volume level is reached, press the "PWR" button once to select.

#### DELETE ALL PAIRED DEVICES:

This feature allows you to delete all paired devices on the interface. The module does NOT allow the user to only clear one device. The module will delete all previously paired devices only

1. Press the "AM/FM" button twice.
2. Press the "AM/FM" button once, to enter the menu options.  
Continue pressing the "AM/FM" button twice till you hear the interface announce "DO YOU WANT TO DELETE PAIRED PHONE LIST".
3. Press the "PWR" button once within 3 seconds to confirm.
4. The interface will ask "ARE YOU SURE", press the "PWR" button once to re-confirm..

Note: The menu structures only remember the last 24 numbers in the call log from dialed from the mobile phone.

Note: All menu structures work in 3 second increments. If after 3 seconds the interface will time-out.

### USING THE MENU STRUCTURE: FOR RADIO TYPE "B".

#### MISSED CALLS:

1. Press the "PWR" button twice.
2. Press the "PWR" button once to enter the menu options.  
Continue to press the "PWR" button twice till you hear the interface announce "MISSED CALLS", and wait for the numbers to be announced.
3. When the number you wish to dial is announced, press the "PWR" button once to make the call.

#### INCOMING CALLS:

1. Press the "PWR" button twice.
2. Press the "PWR" button once to enter the menu options.  
Continue to press the "PWR" button twice till you hear the interface announce "INCOMING CALLS", and wait for the numbers to be announced.
3. When the number you wish to dial is announced, press the "PWR" button once to make the call.

#### OUTGOING CALLS:

1. Press the "PWR" button twice.
2. Press the "PWR" button once to enter the menu options.  
Continue to press the "PWR" button twice till you hear the interface announce "OUTGOING CALLS", and wait for the numbers to be announced.
3. When the number you wish to dial is announced, press the "PWR" button once to make the call.

#### SETTING TTS VOLUME:

1. Press the "PWR" button twice.
2. Press the "PWR" button once to enter the menu options.  
Continue to press the "PWR" button twice till you hear the interface announce "SETTING VOLUME", and wait for her announcement.
3. Set the TTS volume by turning the volume knob and waiting for the announcement. Each announcement will indicate the volume level of the TTS.
4. When the desired volume level is reached, press the "PWR" button once to select.

#### DELETE ALL PAIRED DEVICES:

This feature allows you to delete all paired devices on the interface. The module does NOT allow the user to only clear one device. The module will delete all previously paired devices only

1. Press the "PWR" button twice.
2. Press the "PWR" button once, to enter the menu options.  
Continue pressing the "PWR" button twice till you hear the interface announce "DO YOU WANT TO DELETE PAIRED PHONE LIST".
3. Press the "PWR" button once within 3 seconds to confirm.
4. The interface will ask "ARE YOU SURE", press the "PWR" button once to re-confirm..

Note: The menu structures only remember the last 24 numbers in the call log from dialed from the mobile phone.

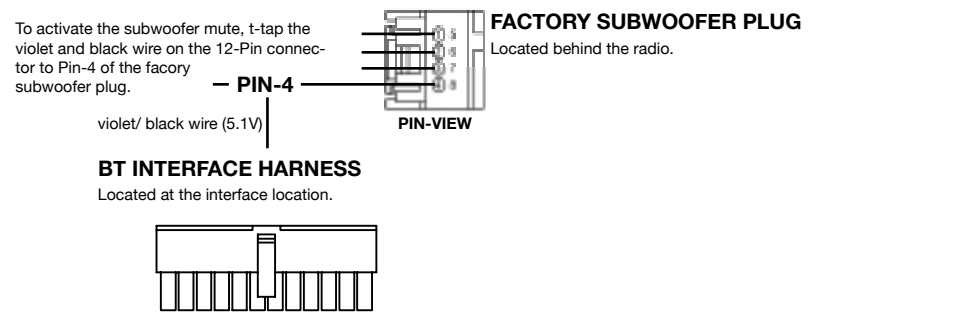
Note: All menu structures work in 3 second increments. If after 3 seconds the interface will time-out.

TROUBLESHOOTING

POSSIBLE ISSUE	POSSIBLE SOLUTION(S)
Is there noise coming from the Auxiliay input?	Disconnect the CAN-BUS connector.
What is the "Phone Mode Wire"?	Connecting this cable will display "Phone Mode" durring a phone conversation.

SUBWOOFER MUTE DIAGRAM

The subwoofer mute wire is to be used when there is unwanted noise coming from the vehicles facotry subwoofer while durring a phone call. To mute the subwoofer completely durring a phone call, please connect wire as follows:



2-PIN CONNECTOR CONFIGURATION

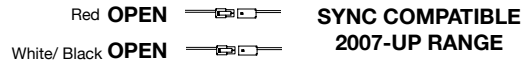
These are the following ways to coonect the 2-PIN connectors. There are three ways that the conneciosn can be used, for the purpose of a wide year range.

A. For most 2007 and newer vehicles, combination "A" will need to be used. This leaves both 2-Pin connectors open and disconnected.

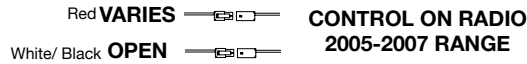
B. For most 2005-2007 vehicles, combination "B" will need to be used. This leaves the white/black wire open and the red wire may vary. Begin with leav- ing the red wire disconnected, and if the interface is not recognized properly please try connecting it.

C. For most 2003-2006 vehicles, combination "C" will need to be used. This connects both 2-Pin conectors.

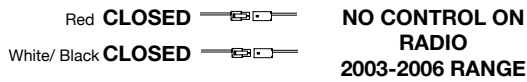
A. CAN-BUS VEHICLES



B. CAN-BUS AND ACC VEHICLES



C. ACC ONLY VEHICLES (NON-CAN)



Note: If after a command the radio is powered "OFF", you must power "ON" the radio to regain volume control.

Note: If an incoming call is answered from the mobile phone's keypad, the call will direct itself to the headset on the mobile phone. To re-direct the phone call to the "BEEBF-24", it must be done directly from the mobile phone.

Note: When transferring a phone call to the mobile phone for privacy, the user must re-connect the BEEBF-24 and the mobile phone by selecting the module from the device menu on the phone.

Note: If after ending a call the radio is powered "OFF", you must power "ON" the radio to regain volume control.

Note: The volume may vary at times. In order to correct the volume level, you must reset the volume knob to 0.



BEEBF-24

**NOTE:** This interface is not compatible with: 2004 - 2006 Vehicles With THX or Navigation systems.

CONNECTION SLIP SHEET

APPLICATIONS

**FORD**  
2004-2006 Crown Victoria  
2007-2010 Edge  
2004-2011 Escape  
2006-2007 Escape Hybrid  
2004-2010 Expedition  
2004-2010 Explorer  
2004-2012 F-150  
2004-2010 F-250  
2004-2010 F-350  
2004-2010 F-450  
2004-2010 F-550  
2005-2007 Five Hundred  
2009-2010 Flex  
2004-2011 Focus  
2004-2007 Freestar  
2005-2007 Freestyle  
2006-2011 Fusion  
2004-2012 Mustang  
2008-2010 Taurus  
2004-2005 Thunderbird

**LINCOLN**  
2003-2005 Aviator  
2004-2006 LS  
2006-2008 Mark LT  
2009-2010 MKS  
2010-2011 MKT  
2006-2011 MKX  
2006-2011 MKZ  
2004-2011 Navigator  
2004-2010 Town Car  
2006-2006 Zephyr

**MERCURY**  
2003-2005 Grand Marquis  
2006-2010 Mariner  
2006-2011 Milan  
2005-2007 Montego  
2004-2007 Monterey  
2006-2010 Mountaineer  
2008-2009 Sable

**Special Note :** For Lincoln 2007-upwards Navigation Screen Radios:

- 1.Disconnect Red Wire on 2 PIN Molex connector.
- 2.Disconnect Red Wire and White/Black Wire on other 2 PIN Molex Connector.
- 3.If experiencing small audio on Subwoofer when BT engaged , Connect Brown/White wire Molex Connectors ("SUBWOOFER ATTENUA- TION ").

**Important Note:**

- 3.1 If this vehicle has THX system , Discon- nect Brown/White wire Molex Connectors

BLUETOOTH INTERFACE FOR SELECT 2003-UP FORD, LINCOLN & MERCURY VEHICLES

**MINI CONNECTORS SLIP SHEET INSTRUCTION**  
CONNECTION OPTION 1:  
FOR EARLY TYPE RADIO MODELS: RADIO A, B, AND C.  
CONNECT 1 AND 3.  
CONNECT NUMBER 2 IF YOUR SYSTEM IS EQUIPPED WITH SUBWOOFER.  
Note: *FOR SOME OLDER VEHICLES THE FUNCTIONALITY WILL NOT FUNCTION THROUGH THE RADIO.*  
*All BT control function will be made from the SWC only. "*

RADIO A



RADIO B



RADIO C

