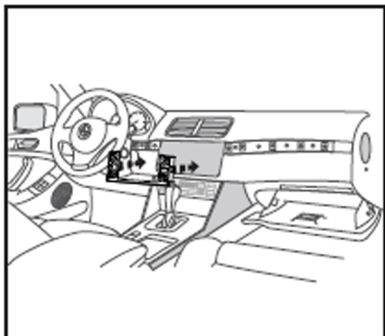
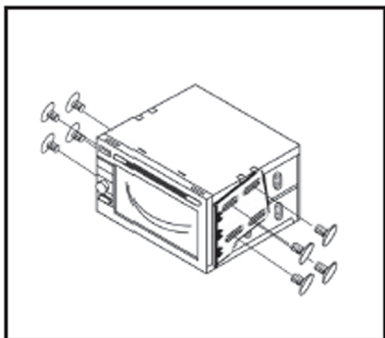


# Kit Assembly



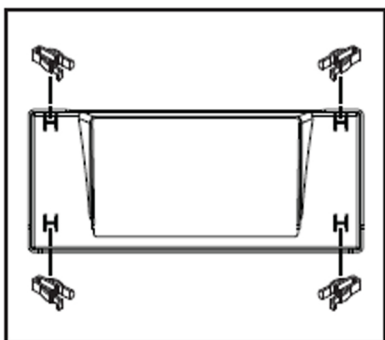
1. Mount the Double DIN fascia into the radio cavity using two of the supplied Phillips screws and two screws removed during disassembly (Image 1)



2. Locate the factory wiring harness in the dash. Reconnect the negative battery terminal and test the unit for proper operation

3. Mount the Double DIN radio to the supplied Double DIN brackets using the 8 supplied ISO screws (Image 2)

4. Push the radio into the dash opening



5. Push the included clips onto the legs of the Double DIN radio trim (Image C)

6. Snap the Double DIN trim over the radio

7. Reassemble dash in reverse order of disassembly to complete your installation



## Installation Manual Double DIN Kit

Part Number: CT24BM08

### BMW 5 Series (E39) 1995>

Matte Black

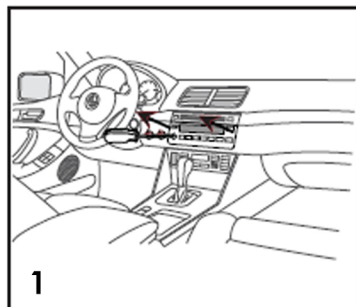
### Double DIN Fitting Kit



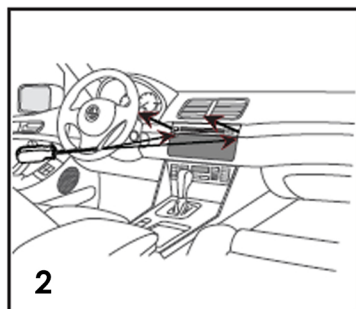
### Kit Components:

BMW Double DIN Fascia  
Double DIN Trim  
Brackets  
Panel Clips  
Screws

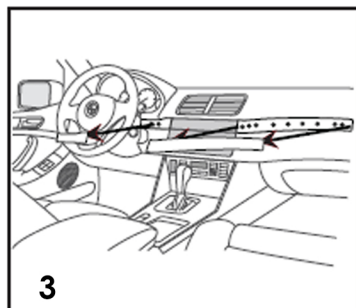
## Dash Disassembly



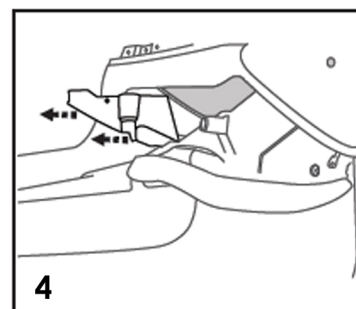
1. Remove the volume by pulling out towards the rear of the vehicle.
2. Use a Torx screwdriver to turn the release screw 90° behind the volume knob. Pull out on the bottom of the radio and remove (Image 1). Disconnect all wiring



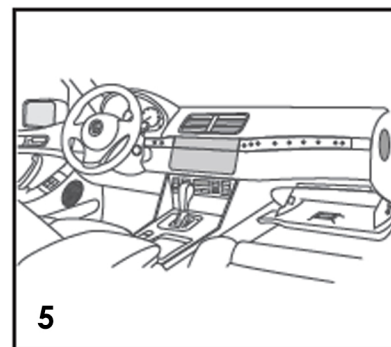
3. Remove the two screws securing the top of the factory radio and remove (Image 2). Disconnect all wiring.
4. Unclip and remove the wood trim above the glovebox and to the left of the radio (Image 3)



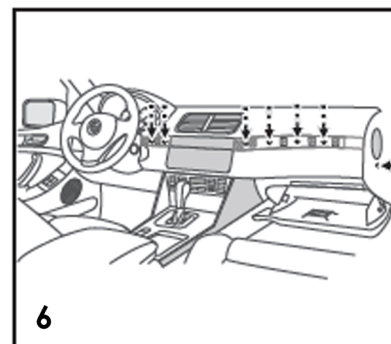
5. Remove the screws securing the two side panels on the centre console, then slide the panels forward to unclip and remove them.



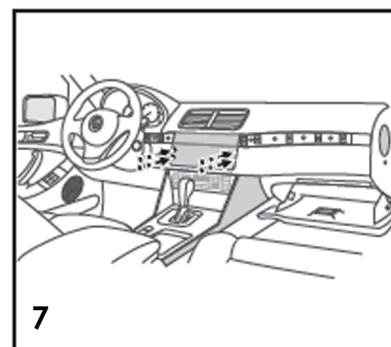
6. Unclip and remove the two glovebox side supports with the glovebox open
7. Remove the two screws securing the panel on the inside left hand side of the glove box, then remove the panel (Image 4)



8. Remove the screws securing the glovebox to the lower dash and let it hang (Image 5)



9. Remove the screws above the glovebox and the one behind the cover on the side of the lower dash panel (Image 6)



10. Remove the two screws on the lower dash panel to the left of the radio (Image 6)

11. Remove the four screws securing the radio sub dash panel to the lower dash panel (Image 7)

12. Pull the right side of the lower dash panel outwards and remove the radio sub dash panel