



**Expand Your Factory Radio**

add  
**iPod®**  
& Audio Input



**Chrysler/Dodge  
Jeep  
Owner's Manual  
SoundByteX  
ISCH73**



**iSimple®**  
a division of AAMP of America™  
13190 56th Court Suite 401 Clearwater, Florida 33760  
Ph. 866-788-4237  
support@isimplesolutions.com  
©2009 AAMP of Florida, Inc.

Rev. 08-28-09  
Inst025

# Installation:

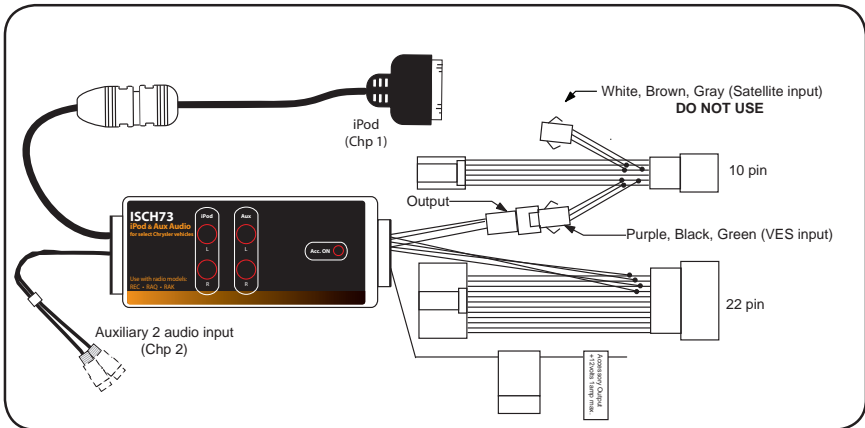
The factory radio model name can usually be found in the front lower left corner of the radio. If the vehicle has a VES (Video Entertainment System), it must be disconnected! This interface is not compatible with REF model radios.

They do not have a VES input available.

1. Remove factory radio. Remove factory female 10 pin Satellite cable, if available. Plug the ISCH73's 10 pin SAT plug into the radio. Plug the factory Satellite cable that was just removed into the ISCH73's 10 pin connector.
2. Insert the ISCH73's 22 pin main power Plug (T-Harness) in between the factory radio and factory harness.
3. If the vehicle has both factory Satellite and VES, you must disconnect the VES at the overhead unit. The Satellite radio will still be available for use. **If the vehicle has factory single disc radio (REF), this interface is NOT compatible.** Refer to vehicle's repair manual for location and removal of the VES plug.
4. The ISCH73 output plug (3 pin connector) must be connected to the VES input harness of the 10 pin T-harness (Purple, Black, Green).
5. To activate iPod® mode, press the MODE button until VES is selected. When Chp 1 is displayed the iPod® will be the selected source. If Chp 2 is selected Aux 2 (standard RCA input) mode will be the selected source. Pressing the MODE button will select either Chp 1 or Chp 2, alternating each time the VES mode is selected.

Chp 1 - iPod® mode

Chp 2 - Auxiliary mode



**Note: The ISCH73 will emulate the VES only! If the vehicle has factory VES it MUST be disconnected. VES does NOT operate in R.A.P. mode. The radio will automatically switch to tuner mode during R.A.P. (Retained Accessory Power)**

**The RED wire with fuse holder:** This wire provides a +12 volt output when key is in accessory or ignition position. The output is 1 amp max. Insulate end if not used. Warning! **Do Not** connect this wire to the vehicle's accessory/ignition wiring.

# Operation:

## Controlling your iPod from the Radio

### RAK and RAQ Radio Buttons:



Track Down - This will select the previous track in the selected playlist.



Track Up - This will select the next track in the selected playlist.



Seek Down - This button will act the same as the Track Down button if pressed for less than 1 second. If pressed and held, it will rewind into the selected track at a rapid rate.



Seek Up - This button will act the same as the Track Up button if pressed for less than 1 second. If pressed and held, it will fast forward the selected track.



Next Playlist - This will jump into the next available playlist and begin playing the first track. There must be a track in the playlist in order to enter it.



Previous Playlist - The interface will automatically play the first track in that folder upon entering it. There must be a song in the playlist or it will be skipped.

### REC Radio Buttons:



Seek Down - If pressed for less than 1 second this the previous track will be selected. If pressed and held, it will rewind into the selected track at a rapid rate.



Seek Up - If pressed for less than 1 second, the next track will be selected. If pressed and held, it will fast forward the selected track.



Next Playlist - This will jump into the next available playlist and begin playing the first track. There must be a track in the playlist in order to enter it.

**\*\* There is no syncing text display on any of these radio's with this interface. The iPod® click wheel will be available for use with this interface in conjunction with the radio's control buttons. Charging of the iPod will occur during Accessory, Ignition and R.A.P. modes. On the steering wheel, only the Track Up and Track Down buttons will control the iPod.**

DISCLAIMER: Under no circumstances shall the manufacturer or the distributors of the ISCH73 parts be held liable for consequential damages sustained in connection with the ISCH73. The manufacture and it's distributors will not, nor will they authorize any representative or any other individual to assume obligation or liability in relation to the ISCH73 other than its replacement.



[www.isimplesolutions.com](http://www.isimplesolutions.com)

**iSimple®**

**a division of AAMP of America™**

**13190 56th Court Suite 401 Clearwater, Florida 33760**

**Ph. 866-788-4237**

**[support@isimplesolutions.com](mailto:support@isimplesolutions.com)**

**©2009 AAMP of Florida, Inc.**