



Pacific Accessory Corporation

VCI-GM1/AV

Video Camera Interface Kit for GM radios with Internal Navigation (for SUV's and trucks only)

INSTRUCTIONS

DISCLAIMER: Under no circumstances shall the manufacturer or the distributors of the VCI-GM1/AV parts be held liable for consequential damages sustained in connection with the VCI-GM1/AV. The manufacture and it's distributors will not, nor will they authorize any representative or any other individual to assume obligation or liability in relation to the VCI-GM1/AV other than its replacement.

Inaccuracies or Typographical Errors: The information these instruction could contain technical or other mistakes, inaccuracies or typographical errors. PAC may make changes to the materials in these instructions at any time without notice. The information in these instructions may be out of date, and PAC makes no commitment to update such information.

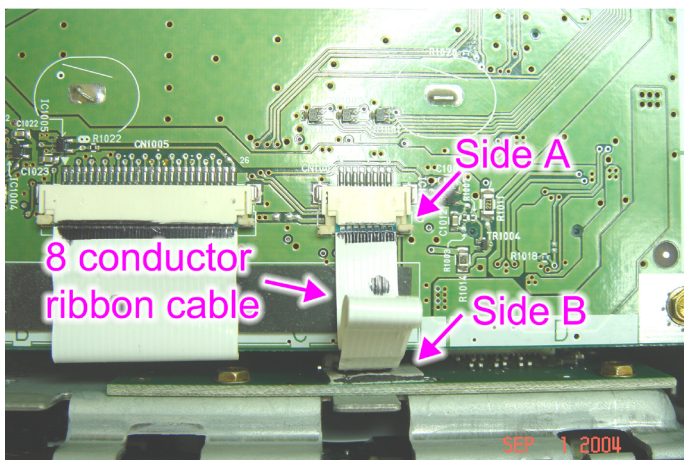
Step 1

Place factory radio upside down on flat surface. Remove bottom cover by prying from the back side of radio first.



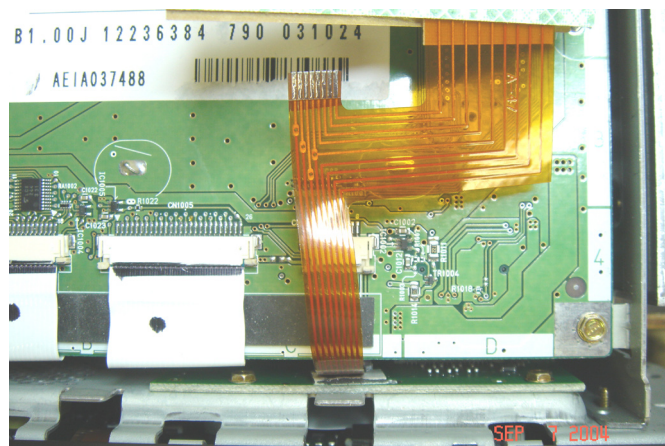
Step 2

On Side A of 8 conductor ribbon cable, pull the release mechanism perpendicular to the main circuit board. This will release Side A of the ribbon cable. Side B of the ribbon cable is held in place by double stick tape. Carefully separate the ribbon cable from the double stick tape on the second circuit board. The double stick tape will need to be reused. Pull the ribbon cable straight out while observing which direction the ribbon contacts face. Place the ribbon cable in the provided manila envelope. Tape the envelope to the inside of radio cover so the cable will not be misplaced, so at a later time, the radio can be converted back to it's original state.



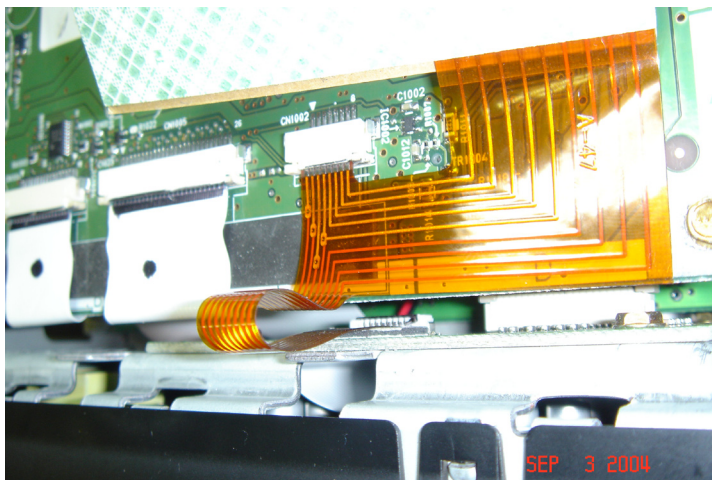
Step 3

Insert the VCI-GM1/AV ribbon cable into the secondary circuit board connector (nickle plated contacts needs to face away from circuit board). Apply ribbon cable to the double stick tape to hold it in place.



Step 4

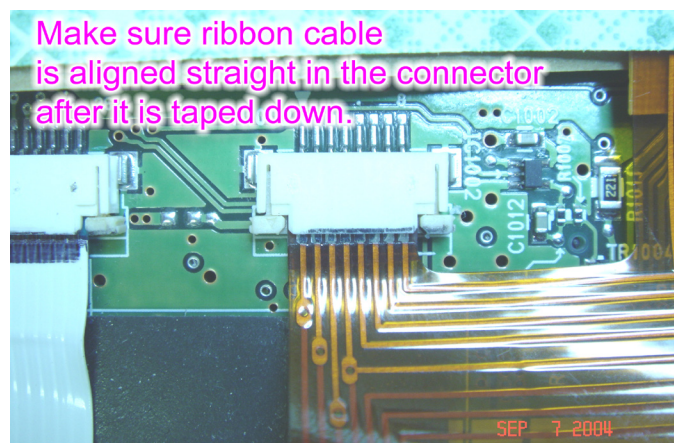
Insert second set of contacts into the main connector (contacts need to be facing upwards). Push the release mechanism back into the connector to lock ribbon cable in place as shown below.



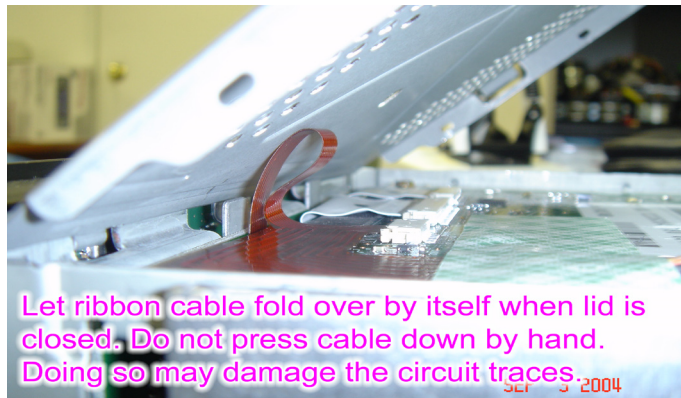
Step 5 Remove brown backing from white double stick tape and from ribbon cable. Apply ribbon to circuit board. Apply double stick tape on top of the colored wires towards back side of radio. Make sure the black insulated cable is about 1 inch inside of the back of radio and is seated in the opening by the hex screw.



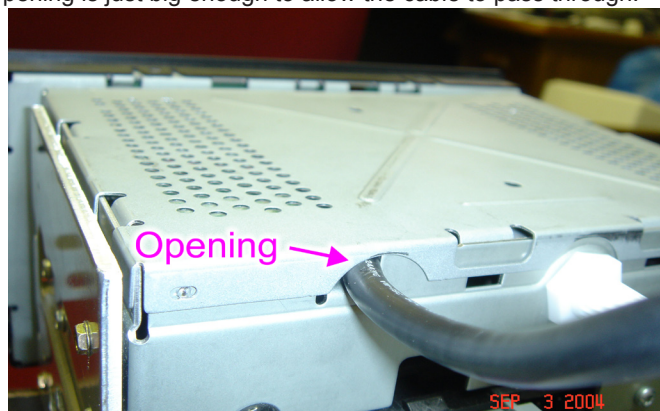
Make sure that the ribbon contacts are straight in the connector after it is taped down.



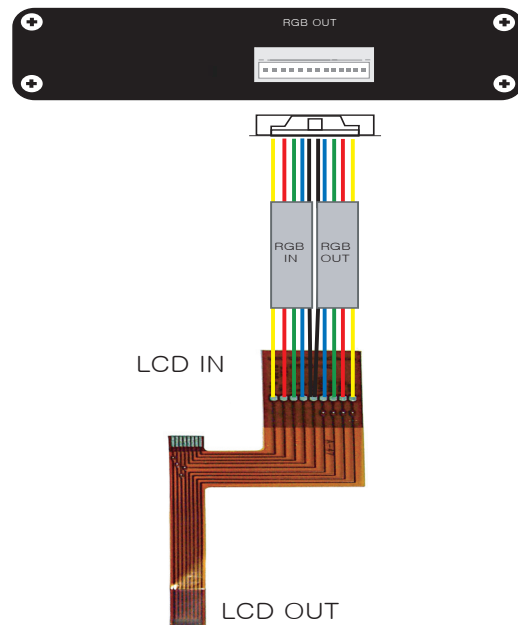
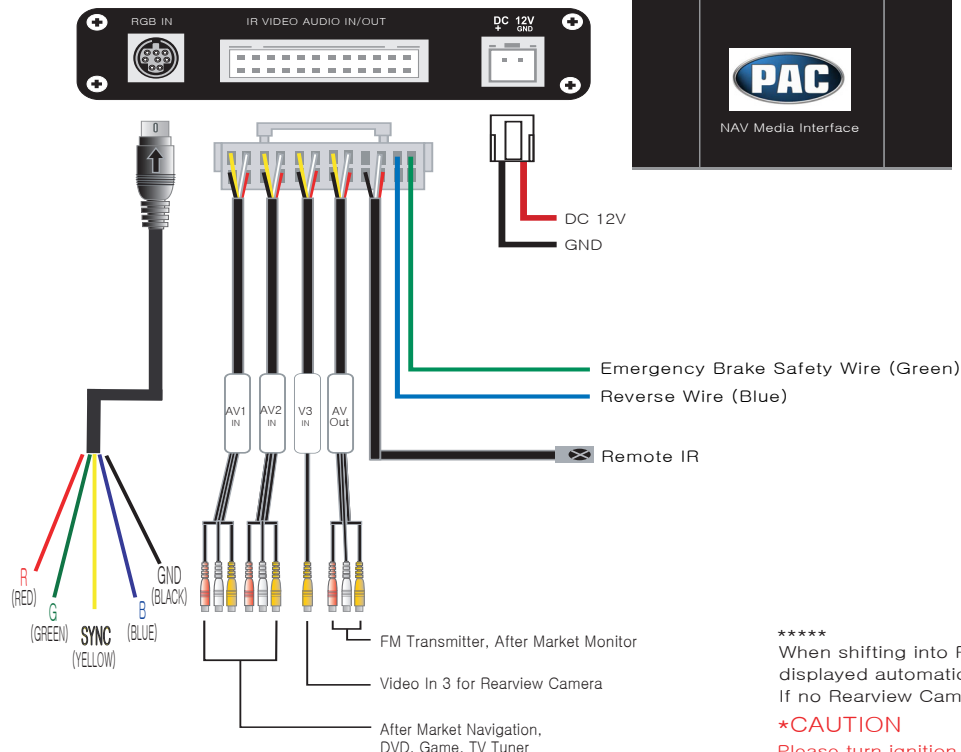
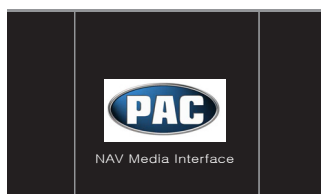
Step 6 Replace the cover to the radio. Let the ribbon cable fold over by itself when replacing cover. **Do not press the ribbon cable down by hand. Doing so may put a crease into the cable and may crack the circuit traces.**



Step 7 Snap cover completely down while being sure not to damage the black insulation part of the cable. The opening is just big enough to allow the cable to pass through.



VCI-GM1/AV
General Motors
Non Touch Screen



When shifting into Reverse, Video 3 (Rearview Camera Input) will be displayed automatically on LCD screen when present.
If no Rearview Camera present automatically change to Main Screen.

***CAUTION**

Please turn ignition off and remove key before starting Installation process.