



Pacific Accessory Corporation

VCI-GM2

Video Camera Interface Kit for GM radios with Internal Navigation with Touch Screen INSTRUCTIONS (for SUV's and trucks only)

Before you begin, you will need an optional SPDT relay, Radio Shack part# RSU-12131470 (special order) or equivalent and 4 female quick disconnect connectors, Radio Shack part# 64-3058 or equivalent.

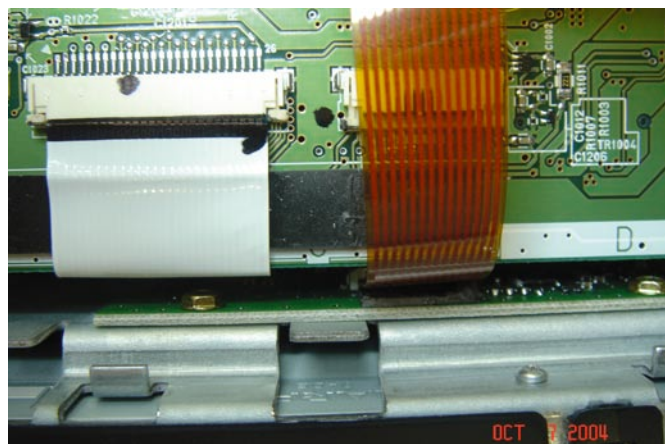
Step 1

Place factory radio upside down on flat surface. Remove bottom cover by prying from the back side of radio first.



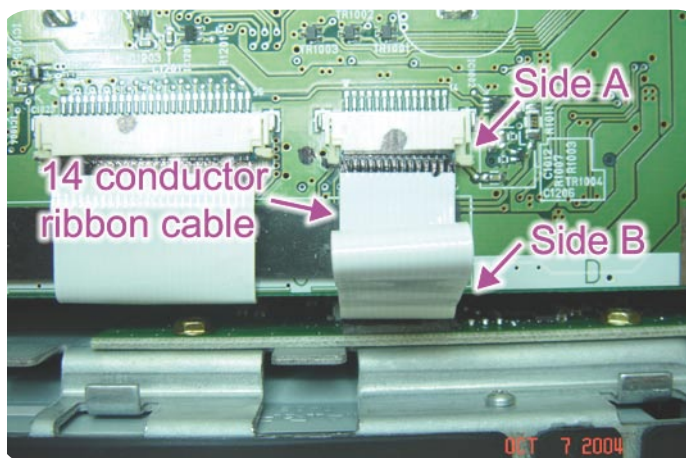
Step 3

Insert the VCI-GM2 ribbon cable into the secondary circuit board connector (nickle plated contacts needs to face away from circuit board). Apply ribbon cable to the double stick tape to hold it in place.



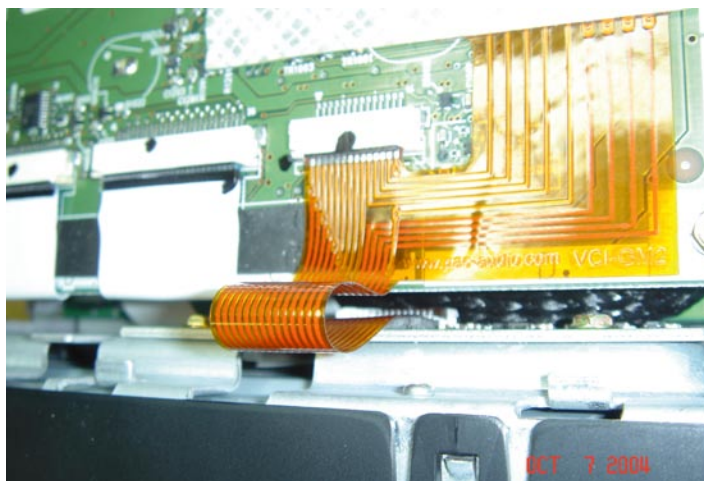
Step 2

On Side A of 14 conductor ribbon cable, pull the release mechanism perpendicular to the main circuit board. This will release Side A of the ribbon cable. Side B of the ribbon cable is held in place by double stick tape. Carefully separate the ribbon cable from the double stick tape on the second circuit board. The double stick tape will need to be reused. Pull the ribbon cable straight out while observing which direction the ribbon contacts face. Place the ribbon cable in the provided manila envelope. Tape the envelope to the inside of radio cover so the cable will not be misplaced, so at a later time, the radio can be converted back to it's original state.



Step 4

Insert second set of contacts into the main connector (contacts need to be facing upwards). Push the release mechanism back into the connector to lock ribbon cable in place as shown below.

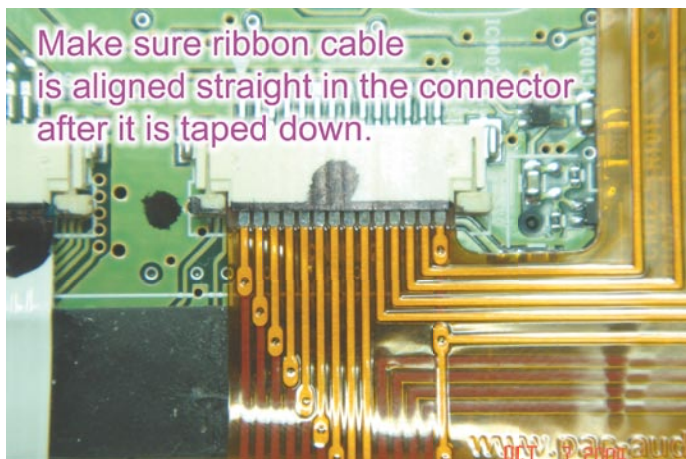


DISCLAIMER: Under no circumstances shall the manufacturer or the distributors of the VCI-GM2 parts be held liable for consequential damages sustained in connection with the VCI-GM2. The manufacturer and it's distributors will not, nor will they authorize any representative or any other individual to assume obligation or liability in relation to the VCI-GM2 other than its replacement.

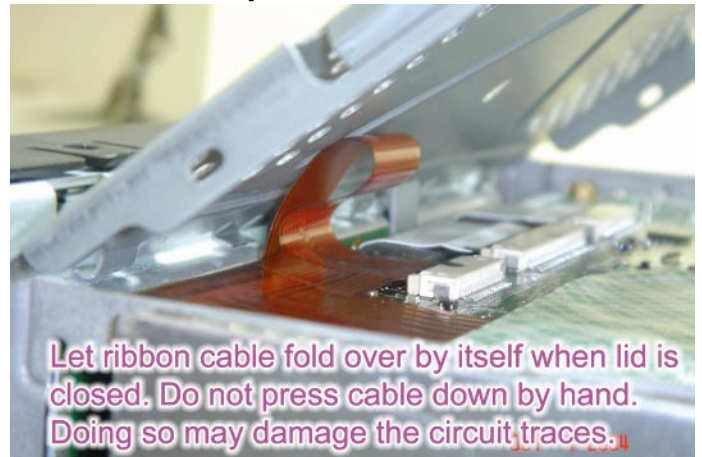
Step 5 Remove brown backing from white double stick tape and from ribbon cable. Apply ribbon to circuit board. Apply double stick tape on top of the colored wires towards back side of radio. Make sure the black insulated cable is about 1 inch inside of the back of radio and is seated in the opening by the hex screw.



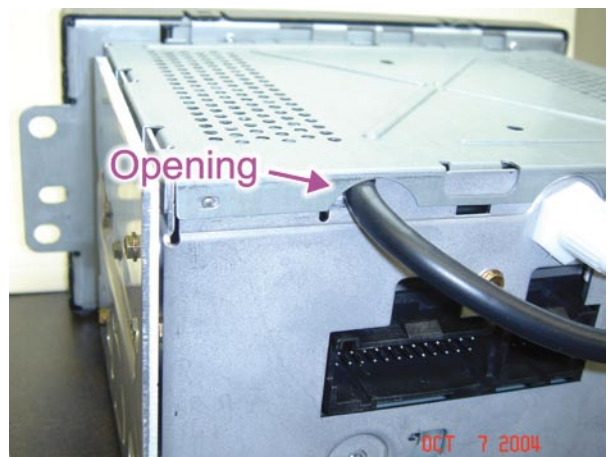
Make sure that the ribbon contacts are straight in the connector after it is taped down.



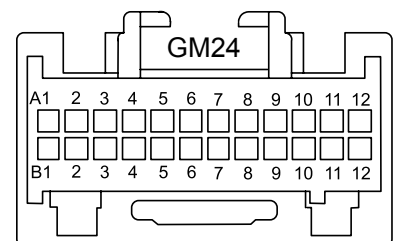
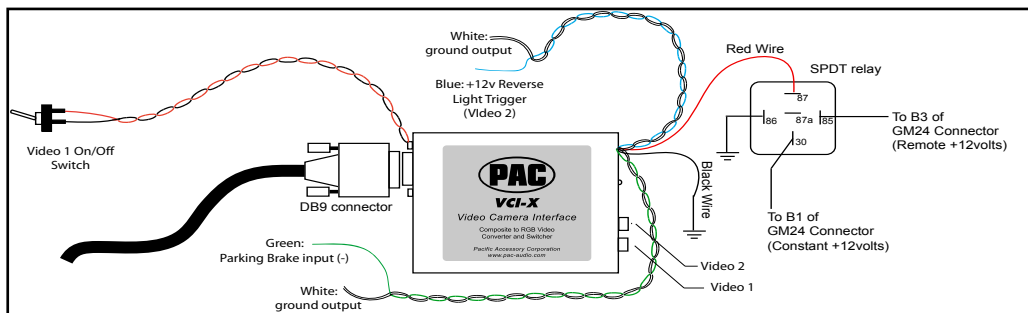
Step 6 Replace the cover to the radio. Let the ribbon cable fold over by itself when replacing cover. **Do not press the ribbon cable down by hand. Doing so may put a crease into the cable and may crack the circuit traces.**



Step 7 Snap cover completely down while being sure not to damage the black insulation part of the cable. The opening is just big enough to allow the cable to pass through.



- Step 8**
1. Connect the VCI-GM2's black power wire to chassis ground. Connect the red wire to an optional SPDT relay as shown below. Do not connect any other interfaces to Pin B3. The power wires are the ones coming out from the DC 12V side of the case.
 2. Connect the VCI-GM2's Blue Trigger wire to the vehicle's +12 volt reverse light supply wire. The Reverse wire will show +12 volts when the vehicle is put into reverse. Connect the Green wire to the vehicles parking brake switch. Video 1 will not operate without this wire properly connected.
 3. Connect the Video Back-up Camera's video output to the VCI-GM2's Video 2 input. (Optional: The VCI-GM2's Video 1 input can be used for a second video backup camera. The toggle switch selects between the radio's normal display or Video 1 input. Video 2 input has precedence over Video 1 input, when the blue wire receives +12volts, regardless of the switch position.)
 4. Connect the DB9 harness to the VCI-GM2 interface and tighten the thumb screws.



Factory Plug. Pin side side showing, not wire side

Testing the VCI-GM2:

1. Turn the vehicle and radio on. The radio display should show normal information.
 - * If there is no image on the display, check for correct power connection on the VCI-GM2.
 - * If the image on the display scrolls across the screen, make sure the ribbon cable is seated in the connector correctly.
2. Temporarily put the vehicle into reverse being careful not to back into anything or anyone. The display screen will change to the video back-up camera mode. Put vehicle back to Park and the radio display should show normal information.
 - *If the radio screen information disappears and you get a blank screen when the vehicle is put into reverse, check the video back-up camera for proper power and video cable connection.