



Pacific Accessory Corporation

# VCI-MBZ/MCR

Video Interface for factory Mercedes ML, CLK and R Class  
W209 / W164 / W251

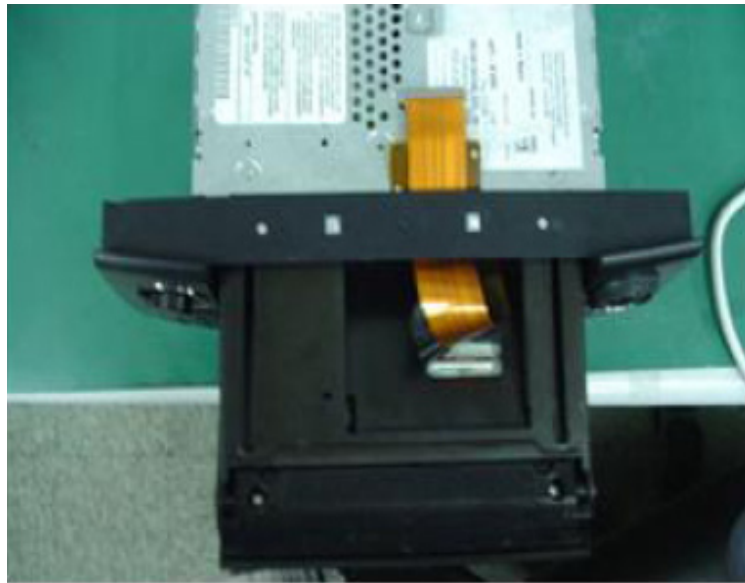


**DISCLAIMER:** Under no circumstances shall the manufacturer or the distributors of the VCI-MBZ/MCR parts be held liable for consequential damages sustained in connection with the VCI-MBZ/MCR. The manufacturer and its distributors will not, nor will they authorize any representative or any other individual to assume obligation or liability in relation to the VCI-MBZ/MCR other than its replacement.

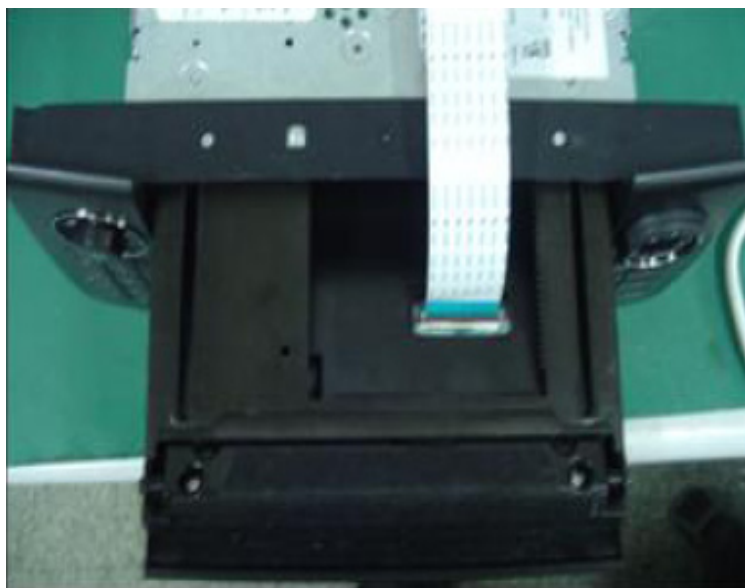
**Inaccuracies or Typographical Errors:** The information in these instructions could contain technical or other mistakes, inaccuracies or typographical errors. PAC may make changes to the materials in these instructions at any time without notice. The information in these instructions may be out of date, and PAC makes no commitment to update such information.



With face open, disconnect radio harness. On bottom of display, disconnect factory ribbon cable.



Pull ribbon cable back and leave exposed.



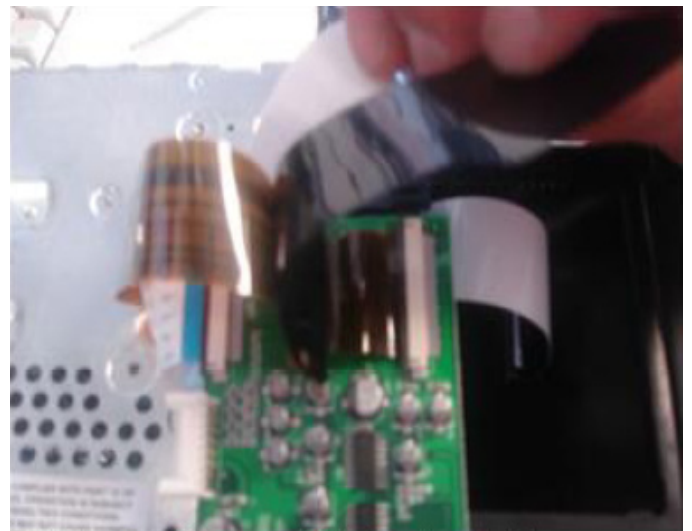
Connect supplied ribbon cable to the display section of the navigation unit.



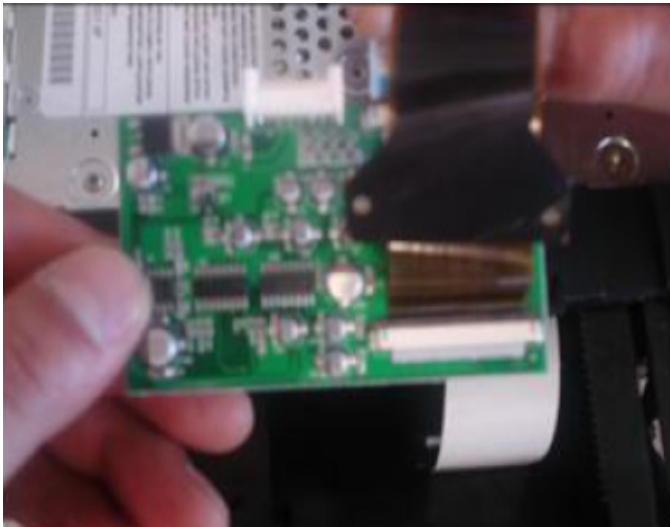
Route the supplied ribbon cable between the chassis and display section.



Connect the supplied ribbon cable to the interface board.



Connect the factory ribbon cable to the interface board.



Make sure the ribbon cable connections are secure.



Test unit to verify if factory display is operable. If there is no picture, re-check all ribbon cables.

