

## BEEBG-25

### APPLICATIONS

#### CHEVROLET

2007-2010 Cobalt  
2006-2011 HHR  
2008-2011 Malibu

#### PONTIAC

2007-2010 G5  
2007-2010 G6  
2006-2009 Solstice

#### SATURN

2006-2009 Aura  
2006-2010 Sky

## BLUETOOTH INTERFACE FOR SELECT 2006-2011 GM LAN 11 BIT VEHICLES

We recommend reading this installation guide first before starting any work. Following these instructions from "Start" to "Finish" will ensure a smooth and hassle free installation. We offer telephone support M-F 9:00 AM – 5:00PM PDT at 1 (888) 607-4449. We are here to help.

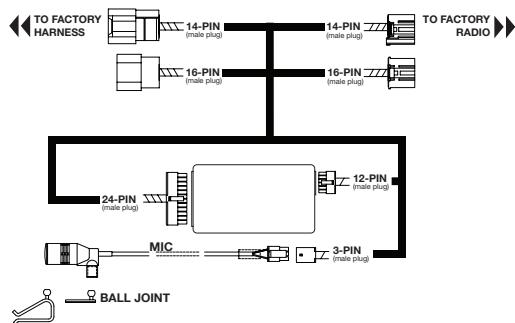
### PRELIMINARY:

- Disconnect the positive(+) battery cable for radios that are non-navigation. Radios that are navigation ready should not disconnect the battery cable. Please use caution when installing. Do not install the interface near or on the vehicle's HVAC system. This will prevent overheating and condensation build up.
- Determine the proper installation method for your specific vehicle. Use overview to help you determine installation method.

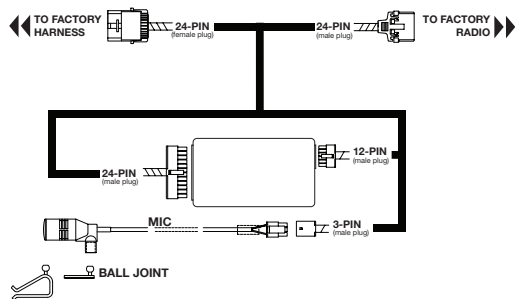
### INSTALLATION

1. Remove the factory radio to gain access to the factory radio wiring connectors.
2. Disconnect the factory connectors from the rear of the factory radio.
3. Connect the male connectors of the interface power harness into the factory radio.
4. Reconnect the factory connectors into the mating connectors of the interface harness.
5. Connect the male 3-pin connector into the pigtail connector.
6. Route the microphone to a desired location, (for example near the rear view mirror).
7. Re-install a factory radio back into the vehicle's dash.

### 14 AND 16-PIN CONNECTORS:



### 24-PIN BLUE CONNECTOR:



### MOUNTING THE MICROPHONE

1. Insert the mounting clip into the ball joint on the microphone.
2. Mount the clip on your visor or near the rear view mirror.
3. Route the remaining cable along the edge of the roof liner and towards the back of the radio, hiding the cable from sight.

### INITIAL PAIRING TO THE VOICE PROMPTS:

1. READY (POWER ON)
2. SEARCHING PHONES (FOR PREVIOUS PAIRED PHONES)
3. PLEASE SEARCH AND SELECT THE "BEEBG-25" DEVICE FROM MOBILE PHONE AND ENTER "0000".
4. YOU ARE NOW READY TO USE THE HF SYSTEM.

Note: The Bluetooth interface will remember up to the last 8 devices.

Note: If pairing is unsuccessful after several attempts power off then power back on to re-attempt, if unsuccessful please contact our tech support line.

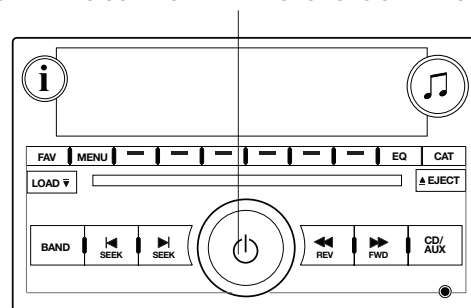
### AUTO RE-CONNECT:

1. The BEEBG-25 module will automatically re-connect the a previously paired mobile phone when the ignition is turned "ON" to the vehicle and the mobile phone's Bluetooth feature is also on.

Note: The Bluetooth module will re-connect with the last mobile phone's it was paired with. If no mobile phone is not found, it will revert to the pairing process.

### OPERATING THE HANDS-FREE FEATURES ON THE RADIO

### UNABLE TO CONTROL THE BT FUNCTIONS ON RADIO



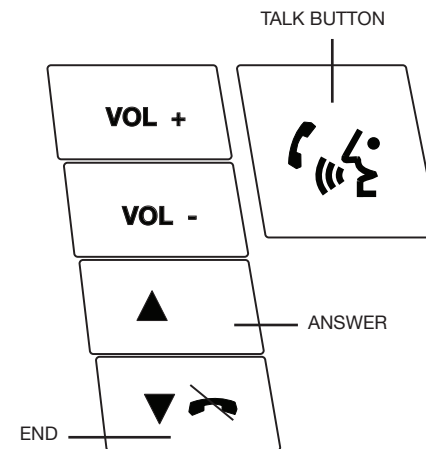
All features of this module may vary by mobile phone manufacturer. For questions on your mobile phone's features, please reference the mobile phone's user manual for information.

Note: If an incoming call is answered from the mobile phone's keypad, the call will direct itself to the headset on the mobile phone. To re-direct the phone call to the "BEEBG-25", it must be done directly from the mobile phone.

Note: When transferring a phone call to the mobile phone for privacy, the user must re-connect the BEEBG-25 and the mobile phone by selecting the module from the device menu on the phone. Note: If after ending a call the radio is powered "OFF", you must power "ON" the radio to regain volume control.

### USING THE STEERING WHEEL CONTROL BUTTONS

|                      |                           |
|----------------------|---------------------------|
| VOICE DIAL           | PRESS TALK BUTTON ONCE    |
| ANSWER               | PRESS TALK BUTTON ONCE    |
| END A CALL           | PRESS SEEK DN BUTTON ONCE |
| REJECT               | PRESS SEEK DN BUTTON ONCE |
| ANSWER SECOND CALL   | PRESS SEEK UP BUTTON ONCE |
| SWITCH BETWEEN CALLS | PRESS SEEK UP BUTTON ONCE |
| INCREASE VOLUME      | PRESS VOLUME UP ONCE      |
| DECREASE VOLUME      | PRESS VOLUME DN ONCE      |
| PRIVACY MODE         | PRESS SEEK UP ONCE        |



Note: Premium Audio Systems and BOSE Systems need to "Turn On" the radio for hands-free audio to be heard.

## BEEBG-25

### APPLICATIONS

#### CHEVROLET

2007-2010 Cobalt  
2006-2011 HHR  
2008-2011 Malibu

#### PONTIAC

2007-2010 G5  
2007-2010 G6  
2006-2009 Solstice

#### SATURN

2006-2009 Aura  
2006-2010 Sky

## BLUETOOTH INTERFACE FOR SELECT 2006-2011 GM LAN 11 BIT VEHICLES

USING THE MENU STRUCTURE:

#### MISSED CALLS:

1. Press the "TALK" button once.
2. Press the "TALK" button once to enter the menu options.  
Continue to press the "TALK" button till you hear the interface announce "MISSED CALLS", and wait for the numbers to be announced.
3. When the number you wish to dial is announced, press the "SEEK UP" button once to make the call.

#### INCOMING CALLS:

1. Press the "TALK" button once.
2. Press the "TALK" button once to enter the menu options.  
Continue to press the "TALK" button till you hear the interface announce "INCOMING CALLS", and wait for the numbers to be announced.
3. When the number you wish to dial is announced, press the "SEEK UP" button once to make the call.

#### OUTGOING CALLS:

1. Press the "TALK" button once.
2. Press the "TALK" button once to enter the menu options.  
Continue to press the "TALK" button till you hear the interface announce "OUTGOING CALLS", and wait for the numbers to be announced.
3. When the number you wish to dial is announced, press the "SEEK UP" button once to make the call.

#### SETTING TTS VOLUME:

1. Press the "TALK" button twice.
2. Press the "TALK" button once to enter the menu options.  
Continue to press the "TALK" button twice till you hear the interface announce "SETTING VOLUME", and wait for her announcement.
3. Set the TTS volume by pressing the volume Vol+ and Vol- waiting for the announcement. Each announcement will indicate the volume level of the TTS.
4. When the desired volume level is reached, press the "SEEK UP" button once to select.

#### DELETE ALL PAIRED DEVICES:

This feature allows you to delete all paired devices on the interface. The module does NOT allow the user to only clear one device. The module will delete all previously paired devices only

1. Press the "TALK" button twice.
2. Press the "TALK" button once, to enter the menu options.  
Continue pressing the "TALK" button twice till you hear the interface announce "DO YOU WANT TO DELETE PAIRED PHONE LIST".
3. Press the "SEEK UP" button once within 3 seconds to confirm.
4. The interface will ask "ARE YOU SURE", press the "SEEK UP" button once to re-confirm..

Note: The menu structures only remember the last 24 numbers in the call log from dialed from the mobile phone.

Note: All menu structures work in 3 second increments. If after 3 seconds the interface will time-out.

Note: When OnStar system is in use, the audio from the Bluetooth interface will be muted. If on a call, the phone call will be transfered to the mobile phone's headset.

